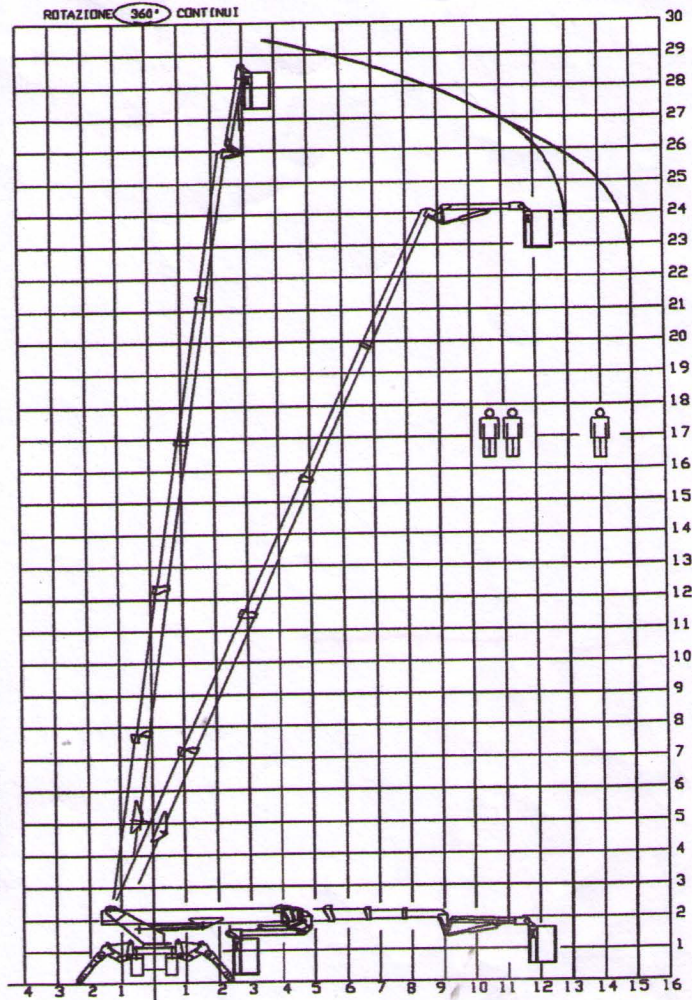
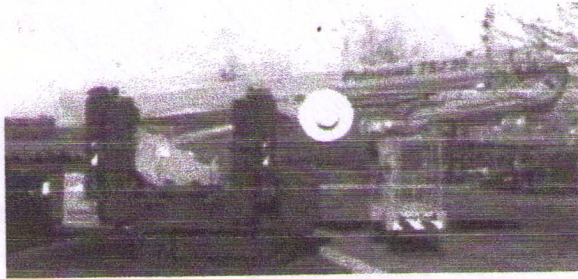
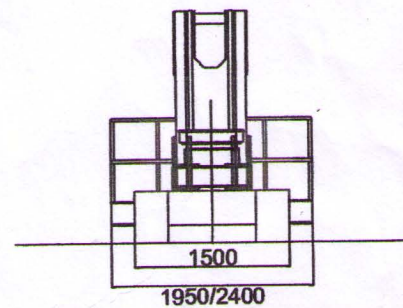
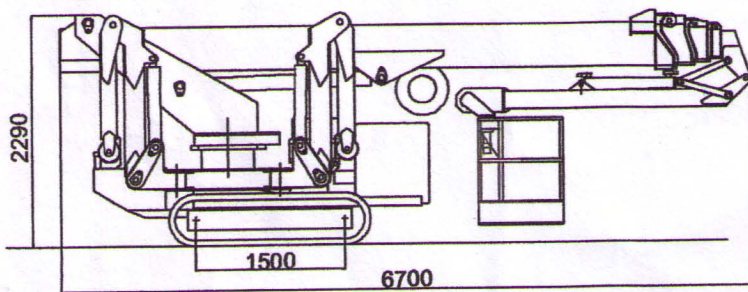


RAGNO TSJ 30/C Versione Cingolata \ Crawler Version \ Raupen Version \ Version Chenilles



MOTORE DIESEL	DIESEL ENGINE	DIESELMOTOR	MOTEUR DIESEL	20 kW
MOTORE ELETTRICO	ELECTRIC MOTOR	ELEKTROMOTOR	MOTEUR ELECTRIQUE	220V-2,2kW
PENDENZA MAX	MAX SLOPE	MAX STEIGFAHIGKEIT	PENTE MAXI	40%
VELOCITA' MAX	MAX SPEED	MAX GESCHWINDIGKEIT	VITESSE MAXI	2 KMH APPR
ROTAZIONE TORRETTA	TURNTABLE SLEWING	DREHTURM ROTATION	ROTAZIONE TOURELLE	360° CONT.
NAVICELLA AEREA	AERIAL CAGE	ARBEITSKORB	NACELLE	2.4 x 0.8 m.
ROTAZIONE NAVICELLA	CAGE ROTATION	KORB ROTATION	ORIENTATION NACELLE	80°+ 80°
PORTATA UTILE	SAFE WORK. LOAD	ZULADUNG	CHARGE UTILE	200 KGS
PRESSIONE CINGOLI	TRACKS PRESSURE	BODENDRUCK AM RAUPEN	PRESSION BEQUILLES	7,65 N/cm ²
PESO	WEIGHT	GEWICHT	POIDS	6.000 KGS



New
NOLOTECNICA
 Service