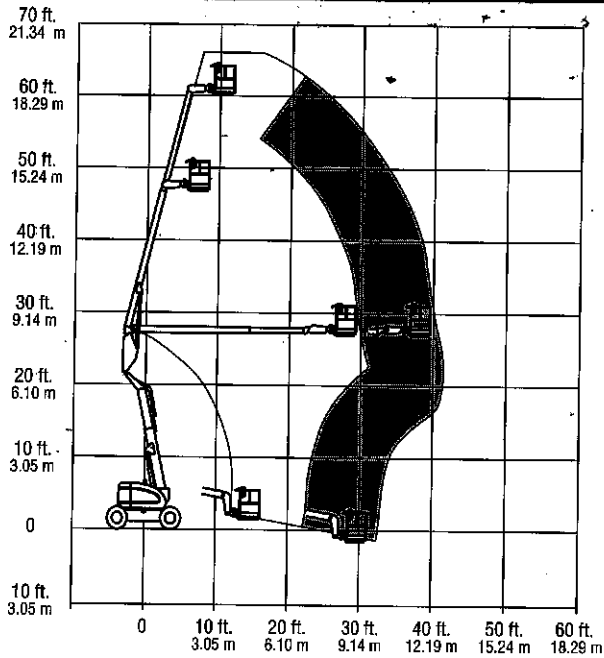
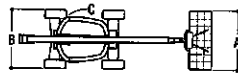
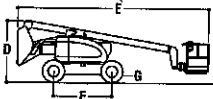


JLG 600A



REACH SPECIFICATIONS

Platform Height	18.29 m (60 ft.)
Horizontal Outreach	12.07 m (39 ft. 7 in.)
Up and Over Clearance81 m (26 ft. 5 in.)
Swing360 degrees continuous
Platform Capacity—Restricted*454 kg (1000 lbs.)
Platform Capacity—Unrestricted227 kg (500 lbs.)
Platform Rotator180 degrees hydraulic



DIMENSIONAL DATA

A. Platform Size0.91 m x 1.83 m (36 in. x 72 in.)
B. Overall Width Model 600A2.44 m (8 ft.)
Overall Width Model 600A narrow2.13 m (7 ft. 0 in.)
C. Tailswing (working condition) 600AZero
Tailswing (working condition) 600A narrow13.02 cm (5 in.)
D. Stowed Height2.56 m (8 ft. 5 in.)
E. Stowed Length8.05 m (26 ft. 5 in.)
F. Wheelbase2.44 m (8 ft.)
G. Ground Clearance30 cm (12 in.)
Gross Vehicle Weight Model 600A**10,330 kg (22,775 lbs.)
Gross Vehicle Weight Model 600A narrow9,616 kg (21,200 lbs.)
Max. Ground Bearing Pressure 600A4.93 kg/cm ² (70 psi)
Max. Ground Bearing Pressure 600A narrow6.42 kg/cm ² (91 psi)
Max. Tyre Load 600A5,227 kg (11,500 lbs.)

CHASSIS

Drive Speed 600A/600A narrow, 2WD5.6 kph (3.5 mph)
Drive Speed 600A 4WD6.4 kph (4.0 mph)
Gradeability 2WD 600A, 600A narrow30%
Gradeability 4WD 600A45%
Tyres 600A***pneumatic, 14 x 17.5
Tyres 600A narrowsolid, segmented, 14 x 17.5
Axle Oscillation (optional)20 cm (8 in.)
Turning Radius, (Inside/Outside)		
600A 2WS3.48 m (11 ft. 5 in.)/5.38 m (17 ft. 8 in.)
600A 4WS1.67 m (5 ft. 6 in.)/3.55 m (11 ft. 8 in.)
600A narrow 2WS3.7 m (12 ft. 2 in.)/5.03 m (16 ft. 6 in.)
600A narrow 4WS1.7 m (5 ft. 7 in.)/3.4 m (11 ft. 2 in.)

POWER SOURCE

Gasoline Engine, Ford LRG-42349.2 kw (66 hp)
Diesel Engine, Deutz F4M1011E48.5 kw (65 hp)
Diesel Engine, Continental TMD2749.6 kw (66.5 hp)
Fuel Tank Capacity113.6 L (30 gal.)
Hydraulic Reservoir115.8 L (30.6 gal.)
Auxiliary Power12V DC

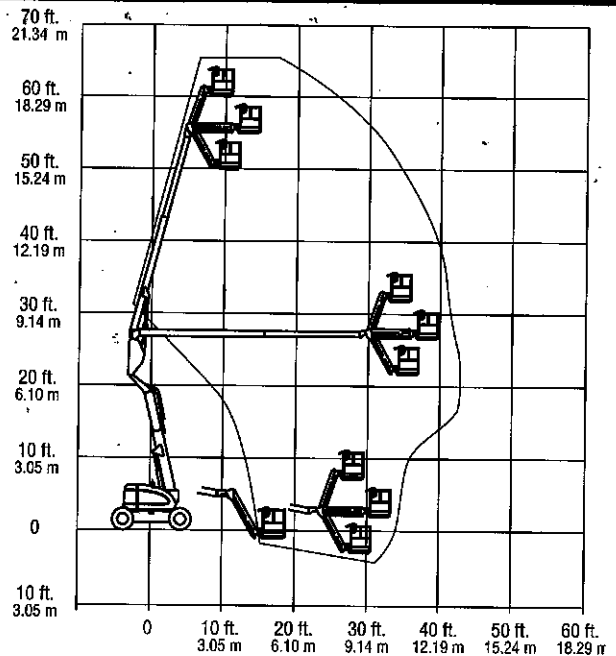
* ANSI A92.5-1992 in USA only.

** May vary dependent on regional requirements.

*** Foam filled tyres required to comply with European regulations.

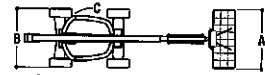
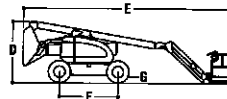
Specifications may change to meet country standards or with the addition of optional equipment.

JLG 600AJ



REACH SPECIFICATIONS

Platform Height	18.29 m (60 ft.)
Horizontal Outreach	12.12 m (39 ft. 9 in.)
Up and Over Clearance81 m (26 ft. 5 in.)
Swing360 degrees continuous
Platform Capacity—Restricted227 kg (500 lbs.)
Platform Capacity—Unrestricted227 kg (500 lbs.)
Platform Rotator180 degrees hydraulic
Jib (Range of Articulation)130 degrees (+70, -60)



DIMENSIONAL DATA

A. Platform Size0.91 m x 1.83 m (36 in. x 72 in.)
B. Overall Width Model 600AJ2.44 m (8 ft.)
Overall Width Model 600AJ narrow2.13 m (7 ft. 0 in.)
C. Tailswing (working condition) 600AJZero
Tailswing (working condition) 600AJ narrow13 cm (5 in.)
D. Stowed Height2.56 m (8 ft. 5 in.)
E. Stowed Length8.82 m (29 ft. 0 in.)
F. Wheelbase2.44 m (8 ft.)
G. Ground Clearance30 cm (12 in.)
Gross Vehicle Weight Model 600AJ**10,650 kg (23,475 lbs.)
Gross Vehicle Weight Model 600AJ narrow10,183 kg (22,450 lbs.)
Max. Ground Bearing Pressure 600AJ4.86 kg/cm ² (69 psi)
Max. Ground Bearing Pressure 600AJ narrow6.50 kg/cm ² (92 psi)
Max. Tyre Load 600AJ5,227 kg (11,500 lbs.)

CHASSIS

Drive Speed 600AJ/600AJ narrow, 2WD5.6 kph (3.5 mph)
Travel Speed 600AJ 4WD6.4 kph (4.0 mph)
Gradeability 2WD 600AJ, 600AJ narrow30%
Gradeability 4WD45%
Tyres 600AJ***pneumatic, 14 x 17.5
Tyres 600AJ narrowsolid, segmented, 14 x 17.5
Axle Oscillation (optional)20 cm (8 in.)
Turning Radius, (Inside/Outside)		
600AJ 2WS3.48 m (11 ft. 5 in.)/5.38 m (17 ft. 8 in.)
600AJ 4WS1.67 m (5 ft. 6 in.)/3.55 m (11 ft. 8 in.)
600AJ narrow 2WS3.7 m (12 ft. 2 in.)/5.03 m (16 ft. 6 in.)
600AJ narrow 4WS1.7 m (5 ft. 7 in.)/3.4 m (11 ft. 2 in.)

POWER SOURCE

Gasoline Engine, Ford LRG-42349.2 kw (66 hp)
Diesel Engine, Deutz F4M1011E48.5 kw (65 hp)
Diesel Engine, Continental TMD2749.6 kw (66.5 hp)
Fuel Tank Capacity113.6 L (30 gal.)
Hydraulic Reservoir115.8 L (30.6 gal.)
Auxiliary Power12V DC

** May vary dependent on regional requirements.

*** Foam filled tyres required to comply with European regulations.

Specifications may change to meet country standards or with the addition of optional equipment.